



Hard Chess Puzzle # 0138

By

G Bud Games
<https://gbud.in>

February 15, 2022

Contents

Hard Chess puzzle # 0138 - Gain opponent's queen in 3 moves	3
Hard chess puzzle 0138	3
Solution to hard chess puzzle 0138	4
Solution 1	4
Right moves for the solution to the hard chess puzzle 0138	7
Explanation for the moves	7
Categories of hard chess puzzle 0138	8
hard chess puzzle 0138 chart	8
How to view the solution to hard chess puzzle 0138	10
How to get help for moves in the hard chess puzzle 0138	11
Play chess for free	12

List of Figures

1	Solve this hard chess puzzle 0138. Gain opponent's queen in 3 moves @ https://gbud.in/gsrslw3	3
2	Solve this hard chess puzzle online with solution @ https://gbud.in/gsrslw3	3
3	Initial board position of hard chess puzzle 0138	4
4	Qd8+	5
5	Qc8	5
6	bxa7+	6
7	Kxa7	6
8	Qxc8	7
9	hard chess puzzle 138 chart 1	8
10	hard chess puzzle 138 chart 2	9
11	hard chess puzzle 138 chart 3	9
12	hard chess puzzle 138 chart 4	10
13	Click the solution button to view solutions @ https://gbud.in/gsrslw3	10
14	Click the help button to get help on next move @ https://gbud.in/gsrslw3	11
15	Solve more hard puzzles @ https://gbud.in/chshdpz	11
16	Solve other puzzles @ https://gbud.in/chsgppz	11
17	Play chess online for free. Solve puzzles and play with friends	12
18	Solve this puzzle online by scanning this QR code or go to the link below	13

Hard Chess puzzle # 0138 - Gain opponent's queen in 3 moves

Solve this hard chess puzzle and improve your chess games through improvement of your chess strategies and chess tactics. This hard puzzle is a subset of [kids games](#).

Puzzle No : 0138

Difficulty level : hard

Description : Gain opponent's queen in 3 moves

Next Move : White

Player level : Advanced

Short URL for puzzle : <https://gbud.in/gsrslw3>

Hard chess puzzle 0138

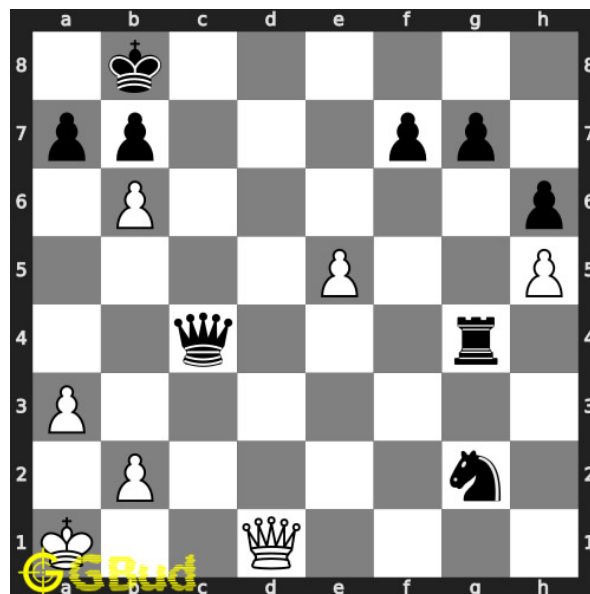


Figure 1: Solve this hard chess puzzle 0138. Gain opponent's queen in 3 moves @ <https://gbud.in/gsrslw3>



Figure 2: Solve this hard chess puzzle online with solution @ <https://gbud.in/gsrslw3>

Dont forget to check out [chess puzzles](#), [easy chess puzzles](#), [medium chess puzzles](#), [hard chess puzzles](#) and [chess puzzles collections](#) .

Solution to hard chess puzzle 0138

At this puzzle, next [move](#) is by [White](#). The objective of the puzzle is to gain opponent's queen in 3 moves.

See the interactive solution at the [puzzle page](#)

Solution 1

Initial board position This is the initial board position of hard chess puzzle 0138.

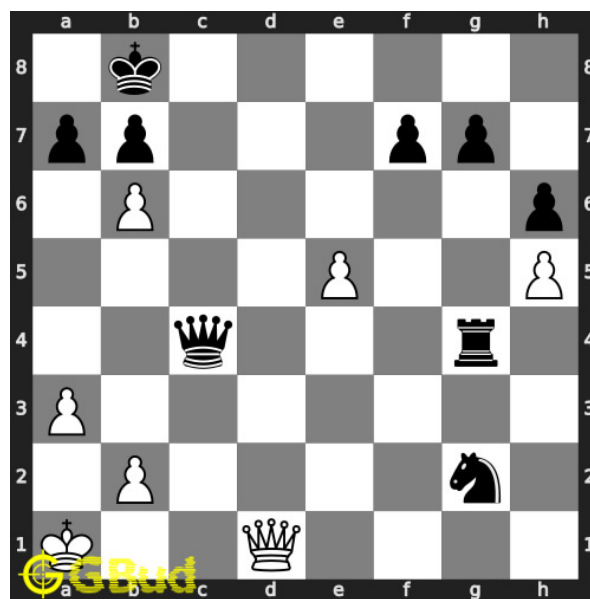


Figure 3: Initial board position of hard chess puzzle 0138

Move 1 Move by white

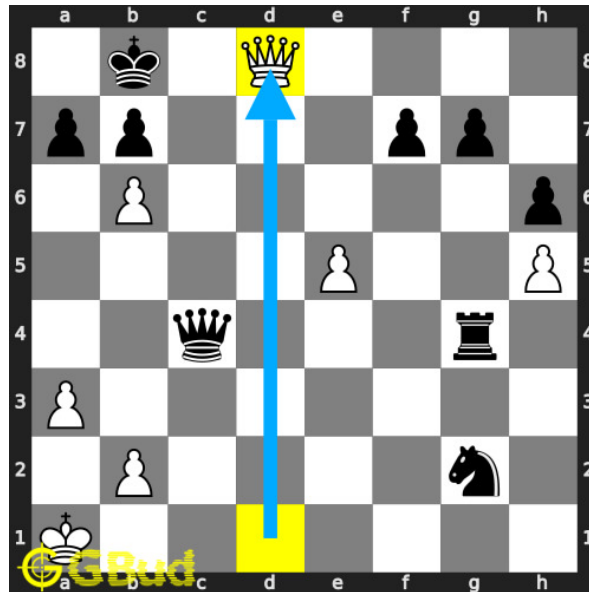


Figure 4: Qd8+

your **queen** moves to **d8** and gives **check**.

Move 2 Move by black

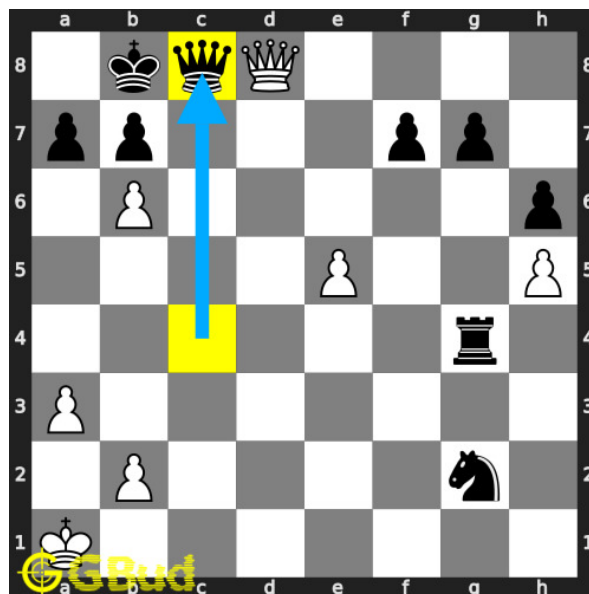


Figure 5: Qc8

opponent's **queen** move to **c8** to block the **check** threat as this is the only legal **move** available to avoid back-rank **mate**.

Move 3 Move by white

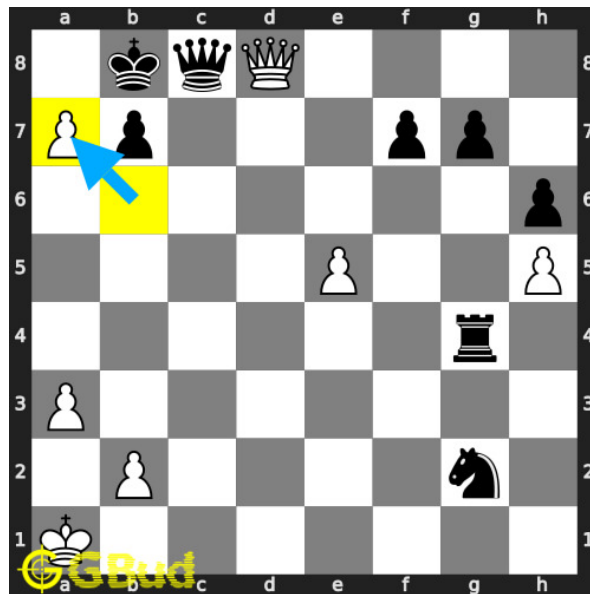


Figure 6: bxa7+

your **pawn sacrifices** itself by giving a **check** to attract the opponent's **king** to **move** away from the **queen**.

Move 4 Move by black

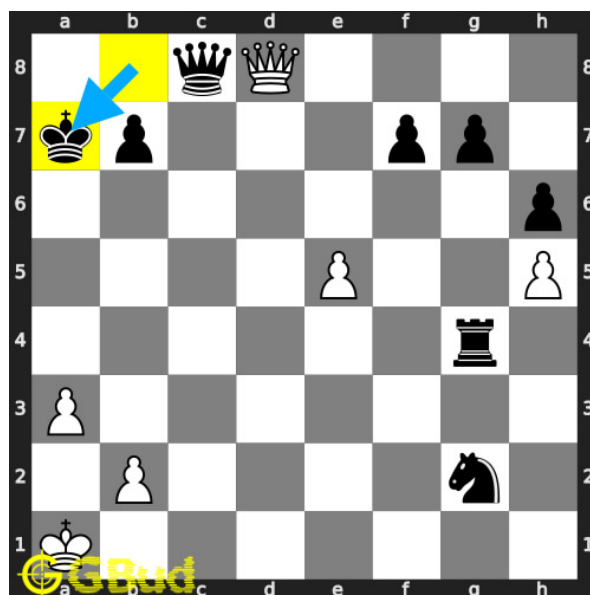


Figure 7: Kxa7

this is a zugzwang **move** as the opponent's **king** is forced to leave the **queen**.

Move 5 Move by white

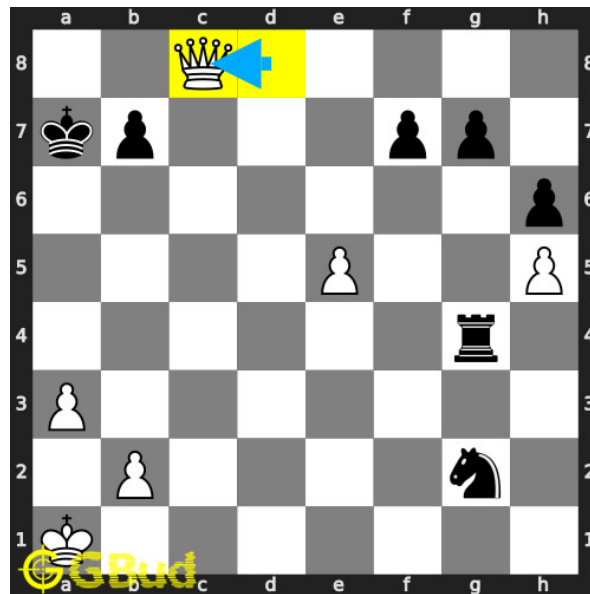


Figure 8: Qxc8

your **queen captures** opponents hanging **queen**. this is how you can gain opponent's **queen** in 3 **moves**.

Right moves for the solution to the hard chess puzzle 0138

Based on the objective of the puzzle, you have to make the right moves. Following are the right moves

1. Qd8+, bxa7+, Qxc8

Explanation for the moves

1. Qd8+ - Your queen moves to d8 and gives check.
2. Qc8 - Opponent's queen move to c8 to block the check threat as this is the only legal move available to avoid back-rank mate.
3. bxa7+ - Your pawn sacrifices itself by giving a check to attract the opponent's king to move away from the queen.
4. Kxa7 - This is a zugzwang move as the opponent's king is forced to leave the queen.
5. Qxc8 - Your queen captures opponents hanging queen. This is how you can gain opponent's queen in 3 moves.
6. For right move - You have done a wonderful job. Keep it up.
7. For wrong move - It seems you failed to use the deflection sacrifice of the pawn to gain the queen. Try again

Categories of hard chess puzzle 0138

This hard chess puzzle falls in these categories.

1. [Hard chess puzzles](#)
2. [Sacrifice puzzles in chess](#)
3. [Gain puzzles in chess](#)
4. [Mate in 3 puzzles in chess](#)
5. [Endgame puzzles in chess](#)
6. [Strategy puzzles in chess](#)
7. [Zugzwang puzzles in chess](#)
8. [Pawn puzzles in chess](#)
9. [Queen puzzles in chess](#)

hard chess puzzle 0138 chart



Figure 9: hard chess puzzle 138 chart 1



Figure 10: hard chess puzzle 138 chart 2



Figure 11: hard chess puzzle 138 chart 3



Figure 12: hard chess puzzle 138 chart 4

How to view the solution to hard chess puzzle 0138

To view the [solution to this puzzle](https://gbud.in/blog/game/chess/hard-chess-puzzles/hard-chess-puzzle-0138.html), follow the steps given below

1. Go to the [puzzle page](https://gbud.in/blog/game/chess/hard-chess-puzzles/hard-chess-puzzle-0138.html)
2. Click the solution button (Key as shown [below](https://gbud.in/blog/game/chess/hard-chess-puzzles/hard-chess-puzzle-0138.html)) to view the solution



Figure 13: Click the solution button to view solutions @ <https://gbud.in/gsrslw3>

How to get help for moves in the hard chess puzzle 0138

To get help or the possible next moves in the puzzle, , follow the steps given below

1. Go to the [puzzle page](#)
2. Click the help button (exclamation mark as shown [below](#)) to get help or suggestion on next possible [move](#)



Figure 14: Click the help button to get help on next move @ <https://gbud.in/gsrslw3>



Figure 15: Solve more hard puzzles @ <https://gbud.in/chshdpz>



Figure 16: Solve other puzzles @ <https://gbud.in/chsgppz>

Play chess for free

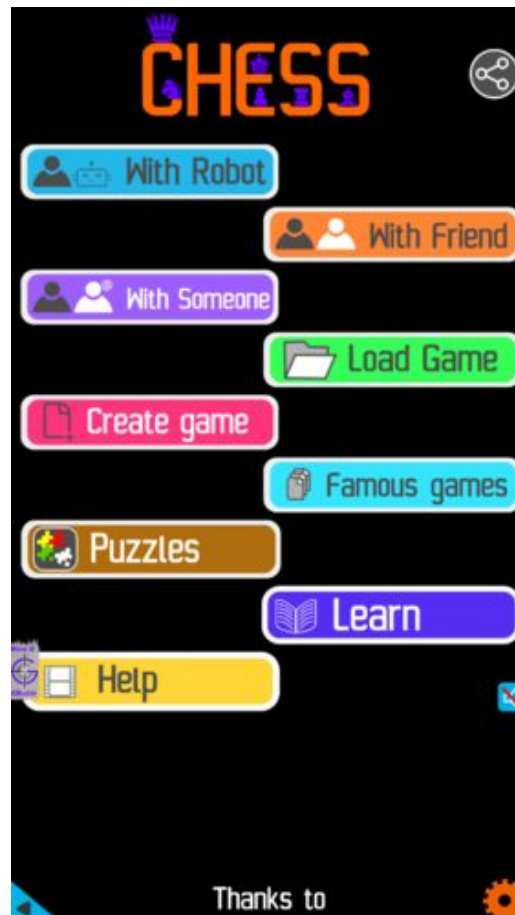


Figure 17: Play chess online for free. Solve puzzles and play with friends

Play chess for free at <https://gbud.in/chs>

We present you a platform to play chess online with friends for free. No need to install any app. You can play chess for free without registration or login.

Simple. You can do several chess related activities.

1. [solve chess puzzles](#)
2. [learn about chess](#)
3. [play chess with computer](#)
4. [play chess with friend](#)
5. [create your own chess games](#)

6. [fen viewer](#)
7. [fen editor](#)
8. [fen generator](#)
9. [pgn viewer](#)
10. [chess board editor](#)
11. [view famous chess games.](#)



Figure 18: Solve this puzzle online by scanning this QR code or go to the link below

<https://gbud.in/gsrslw3>

Read the latest article on Hard Chess puzzle # 0138 - Gain opponent's queen in 3 moves by scanning this QR code or click the link

Previous article : « [Hard Chess puzzle # 0137 - Mate in 3 moves](#)

Next article : [Hard chess puzzles](#) »

[Back to top](#)

[Contact Us](#)